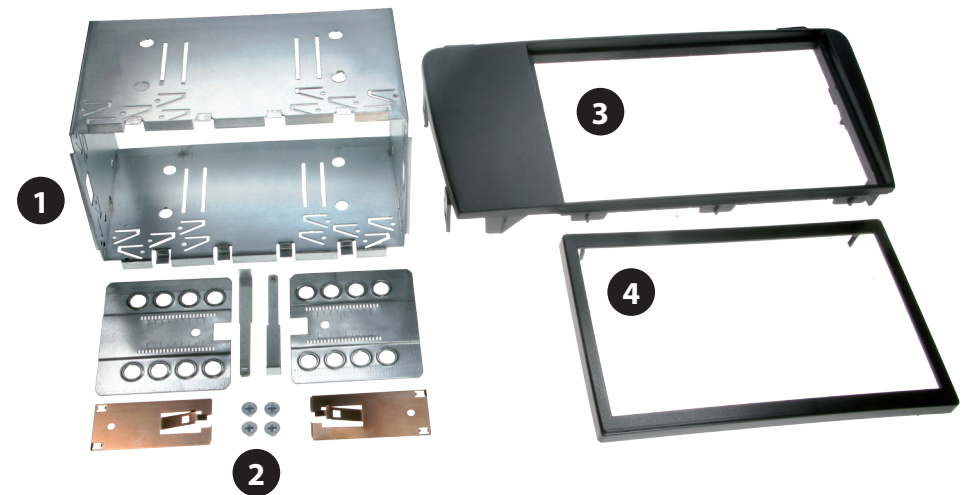




- **Volvo S60 2004-> / V70 2004->**
- **Volvo XC70 2004->**

Compatible with these double DIN devices

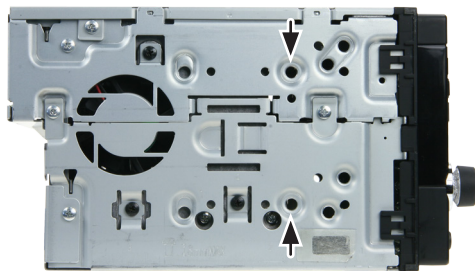
Double DIN Navigation



Double DIN Kit contents

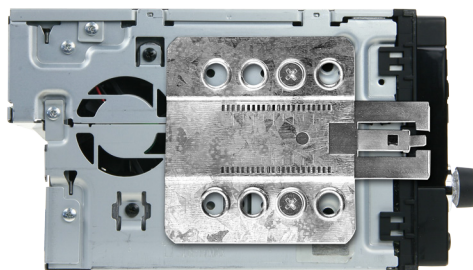
- (1) Metal Frame
- (2) Installation Kit
- (3) Facia Plate
- Trim Frame (4)

Installation Manual Double DIN Kit



(Beispielabbildung)

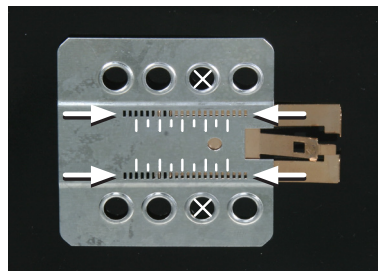
Mount the metal brackets with the double DIN head unit



(Beispielabbildung)

Remove panel beside gear shifter

*All installation work must be performed by a qualified professional installer only.
The manufacturer / dealer is not liable for any kind of incidental or indirect damages.*



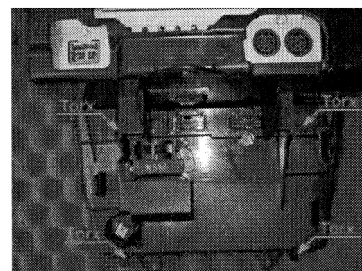
(Beispielabbildung)

The position of the copper coloured holder can be adjusted to your needs for perfect fit. (see sample)

Remove 2 Torx 20 screws
Remove radio/aircon unit



Remove 2x Torx 20
Remove rim



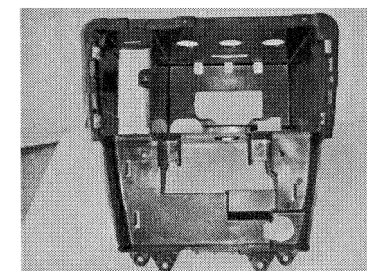
Remove 4 x Torx 20 and
remove aircon unit



Push Double DIN head unit
into panel. Place panel on the
dashboard - connect all wires



Turn head unit carefully



Push metal frame
into panel



Place panels back in
reverse order
Place trim frame