



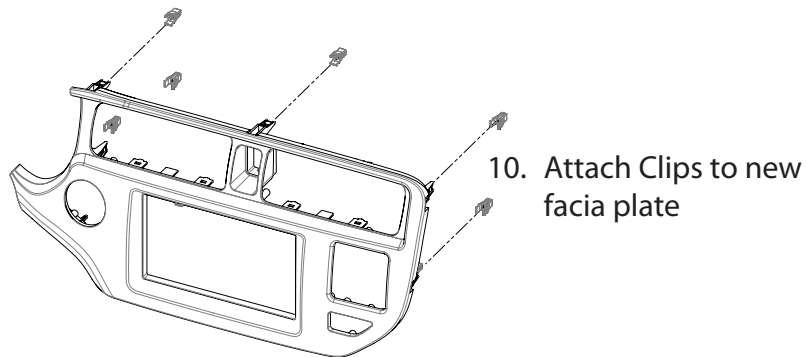
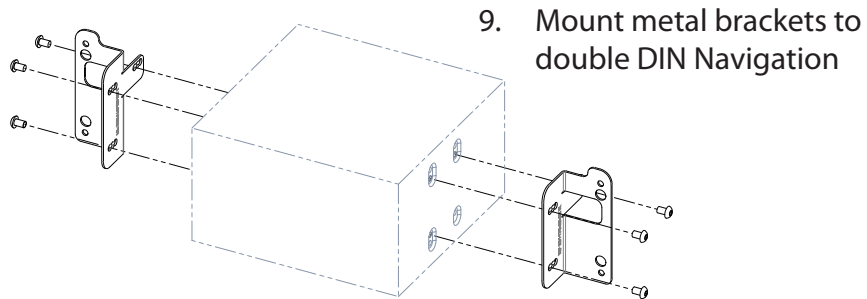
## Installation Manual Double DIN Kit

**anthracite:** 381178-29-1  
**black:** 381178-29-2

### • Kia Rio 2011->

Compatible with Double-DIN devices:

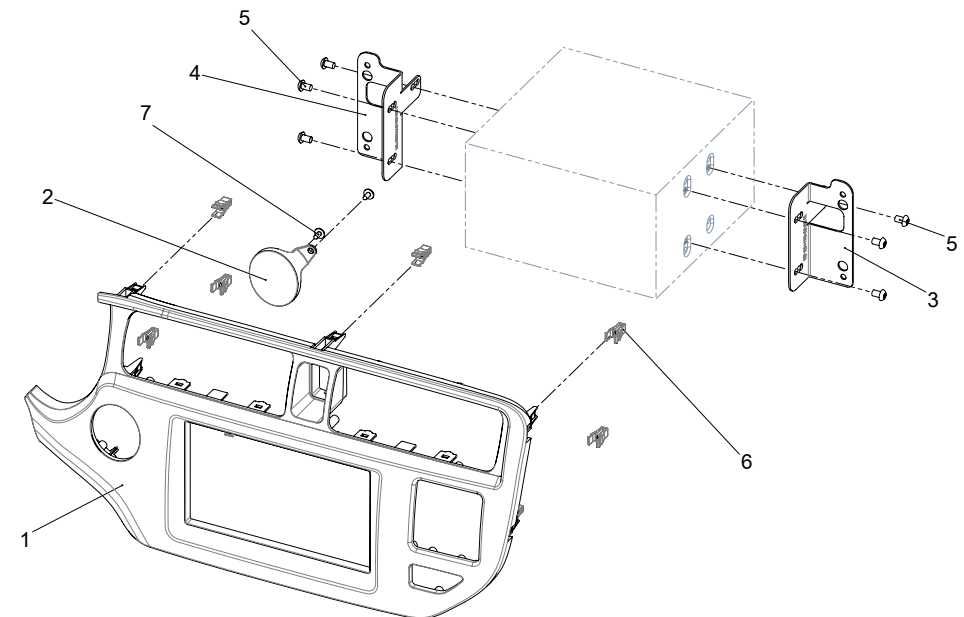
#### Double-DIN Navigation



11. Connect all required circuit points of double DIN head unit

Fix double DIN head unit with 4 screws

Re-install everything in reverse order to finish installation



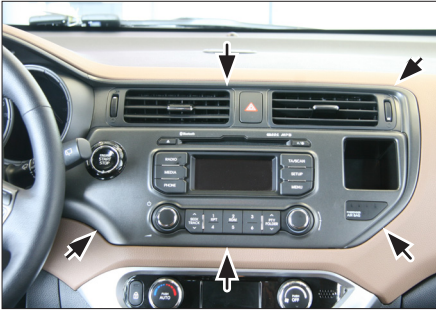
Double DIN Set contents

- (1) Facia Plate
- (2) Cover\*

\*(for models without engine start/stop button)

- (3) Mounting bracket (L)
- (4) Mounting bracket (R)
- (5) flat headed screw
- (6) Clip

## Installation Manual Double DIN Kit



1. Unclip OEM panel (see arrows)



2. Remove panel



3. These parts need to be removed from OEM panel:

- hazard light switch (1)
- air vents (left / right) (2)
- passenger air bag switch (3)



4. Remove hazard light switch



5. Remove air vents



6. Remove passenger air bag switch



7. Models with start/stop:  
Remove start / stop button  
Mount start / stop button  
to new facia plate

Models without start/stop  
Attach cover to facia plate



8. Mount  
- hazard light switch  
- air vents (left / right)  
- passenger air bag switch  
  
to new facia place