

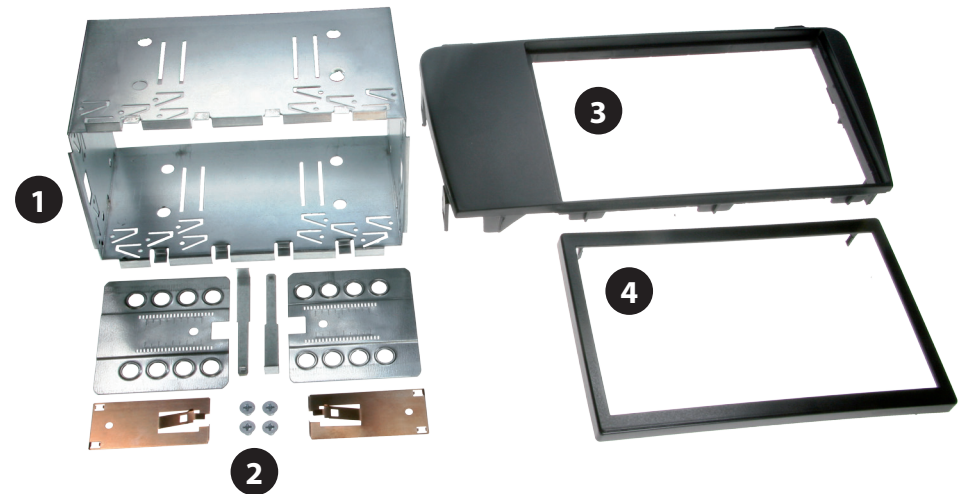


Installation Manual
Double DIN Kit
Part-No.: 381352-05

- **Volvo S60 2004-> / V70 2004->**
- **Volvo XC70 2004->**

Compatible with double DIN devices

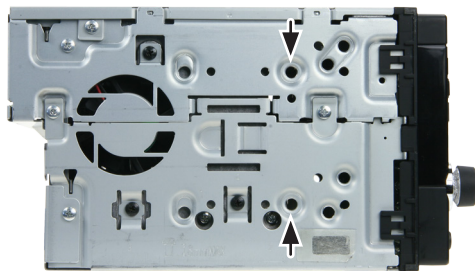
Double DIN Navigation



Double DIN Kit contents

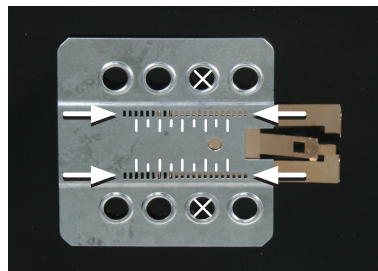
- (1) Metal Frame
- (2) Installation Kit
- (3) Facia Plate
- Trim Frame (4)

Installation Manual Double DIN Kit



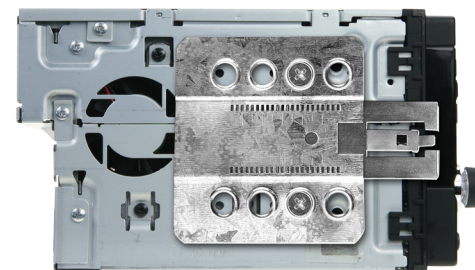
(Beispielabbildung)

Mount the metal brackets with the double DIN head unit



(Beispielabbildung)

The position of the copper coloured holder can be adjusted to your needs for perfect fit. (see sample)



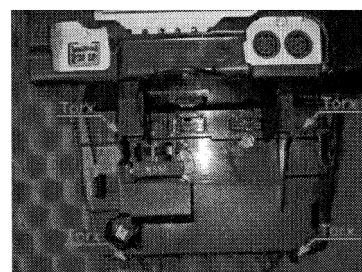
(Beispielabbildung)



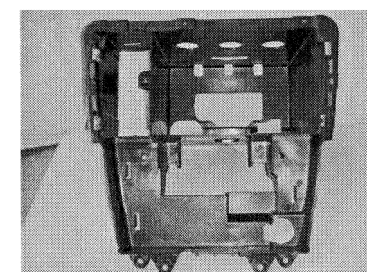
Remove 2x Torx 20
Remove rim



Turn head unit carefully



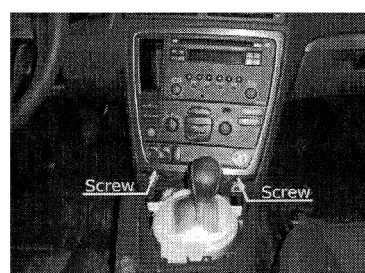
Remove 4 x Torx 20 and
remove aircon unit



Push metal frame
into panel



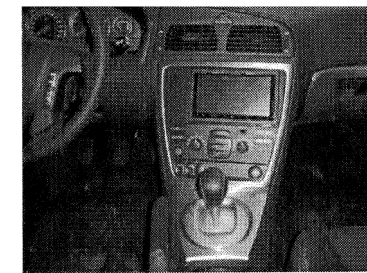
Remove panel
beside gear shifter



Remove 2 Torx 20 screws
Remove radio/aircon unit



Push Double DIN head unit
into panel. Place panel on the
dashboard - connect all wires



Place panels back in
reverse order
Place trim frame

*All installation work must be performed by a qualified professional installer only.
The manufacturer / dealer is not liable for any kind of incidental or indirect damages.*