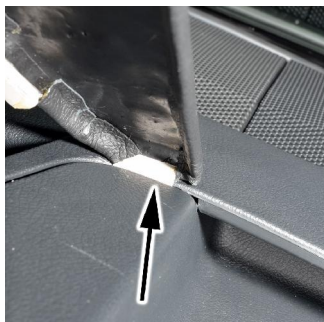


Art.-Nr.: **5790 / 5795**  
item#

**Mercedes Vito 2014-**



Hinteres Blech einschieben



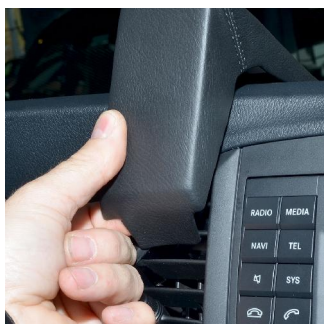
Insert rear metal plate



Linkes Blech einschieben



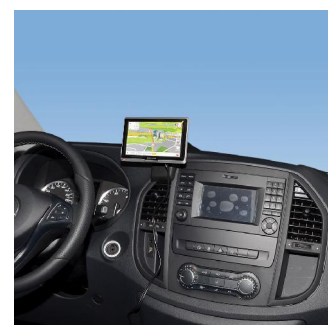
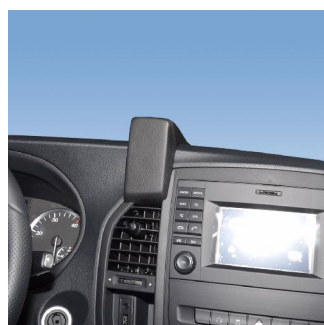
Insert left metal plate



Konsole einhaken



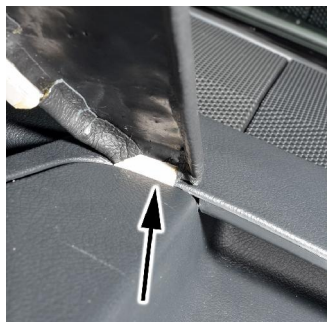
Hook into console



Änderungen vorbehalten Subject to change

Art. 5790 / 5795

Mercedes Vito 2014-



Inserez la tôle arrière



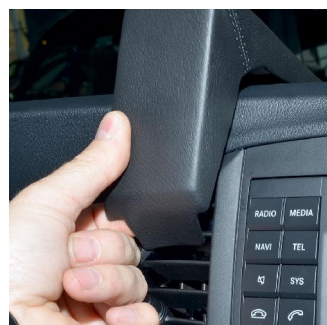
Introduzca la chapa trasera



Inserez la gauche tole



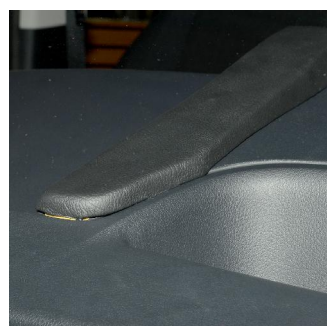
Introduza la chapa izquierda



Accrochez la console



Enganche la consola.

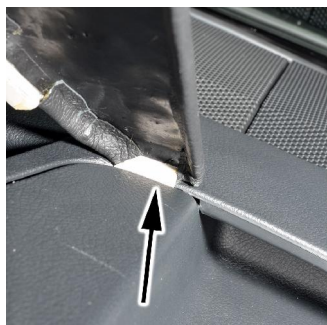


Nous nous réservons la possibilité de modification

Salvo posibles modificaciones

Art. **5790 / 5795**

**Mercedes Vito 2014-**



Achterste plaat er tussen schuiven



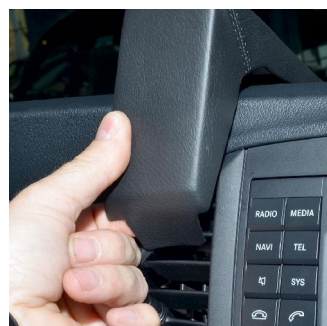
Tylna blaszke wsunac



Linker plaat er tussen schuiven



Wsunac lewa blaszke



Konsole inhaken / aanbrengen



Zaczepic konsole

